

Project: Conversion of Old School to a five bedroom dwelling.
Barkestone-le-Vale, Leistershire.

Contractor: CC Construction

Engineer: Cameron Darroch Associates.

Completion: 2012



New windows and refurbished stone surrounds



Refurbished complete with clock tower!

Project History



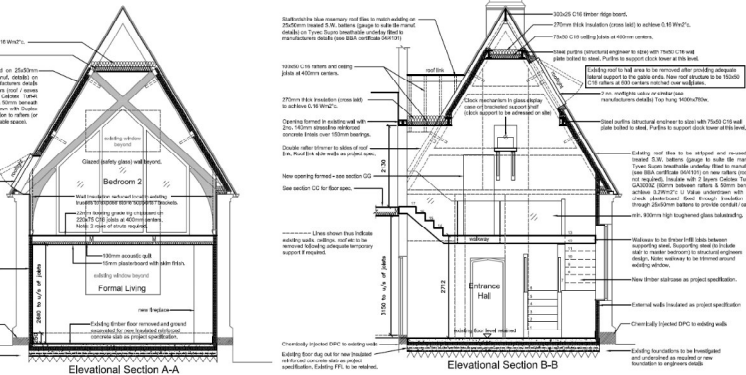
Barkestone-Le-Vale C of E School in the 1950's

This former C of E school opened in 1814 and closed in 1989 after which it was used as the village hall until it was sold at auction in June 2007. Planning permission had been granted to convert the property into a single dwelling in 2006 with a further amended scheme being approved in 2008. We were appointed in December 2010 to have a fresh look at the scheme prior to construction starting in 2011. The original plan was to split the property into two dwellings to make it more financially viable, but unfortunately this was not supported by the local planning authority so it was decided to re-design the layout to maximise the internal space and original features to create a luxury unique five bedroom property. Our amended planning application was approved in June 2010.

The Design

The property was over 2500ft² with impressive double height spaces and many original features including a clock tower and weather vane. The challenge was to create a new first floor level to accommodate the bedrooms without compromising the feeling of height and space. This was achieved by retaining a double height space with high level rooflights to form a grand entrance hall with a staircase and gallery walkways leading to a new first floor level in each of the three wings with the original clock mechanism taking pride of place as a feature.

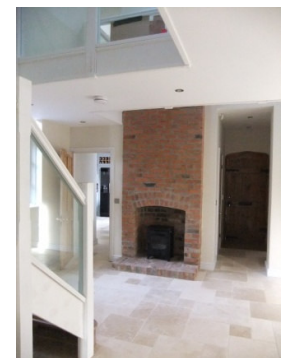
Another double height space was created over the living area making the most of the two original windows on the South-West elevation. The new layout offered 3050ft² of living accommodation with entrance hall, two large reception rooms, large kitchen diner, five bedrooms, two en-suites and family bathroom.



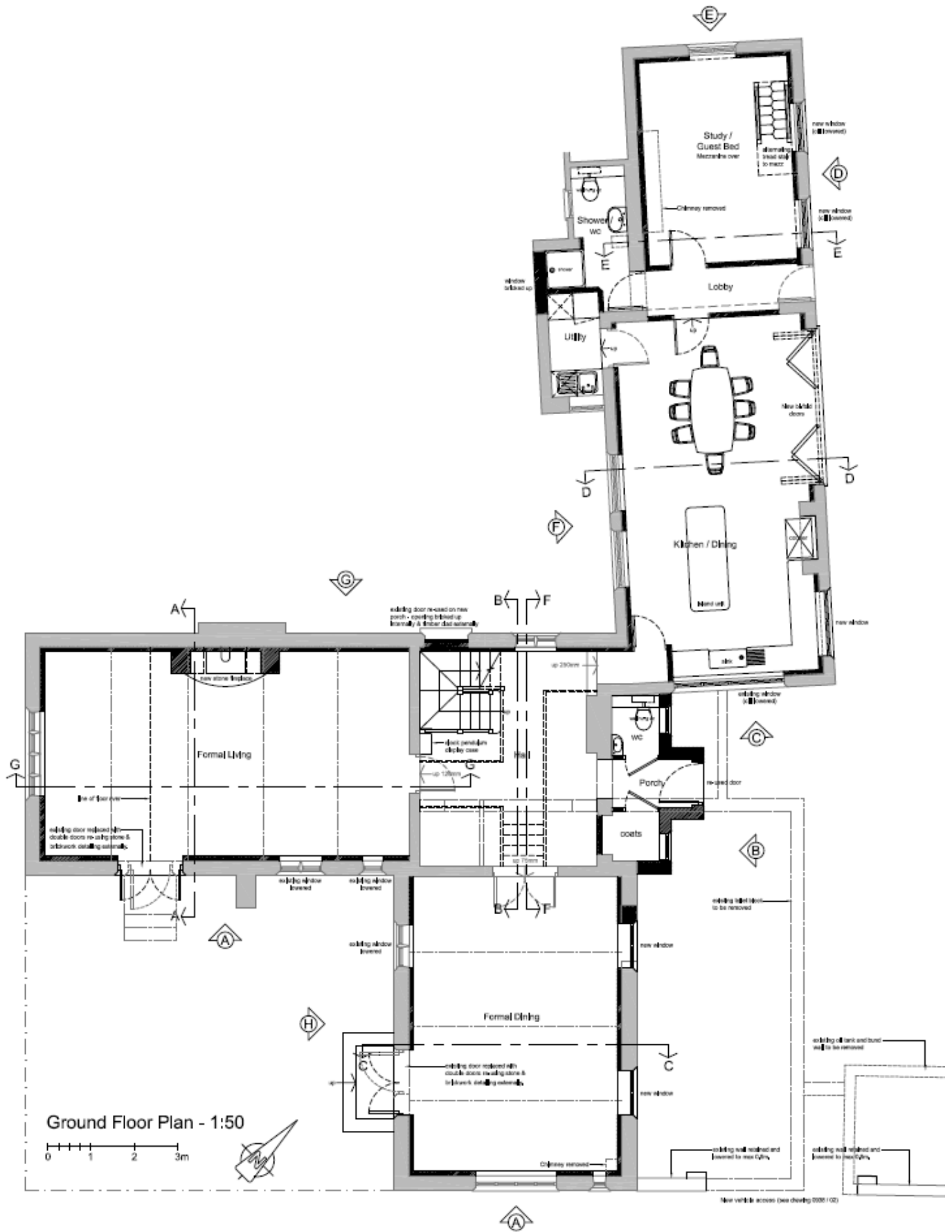
Bedroom looking over double height lounge

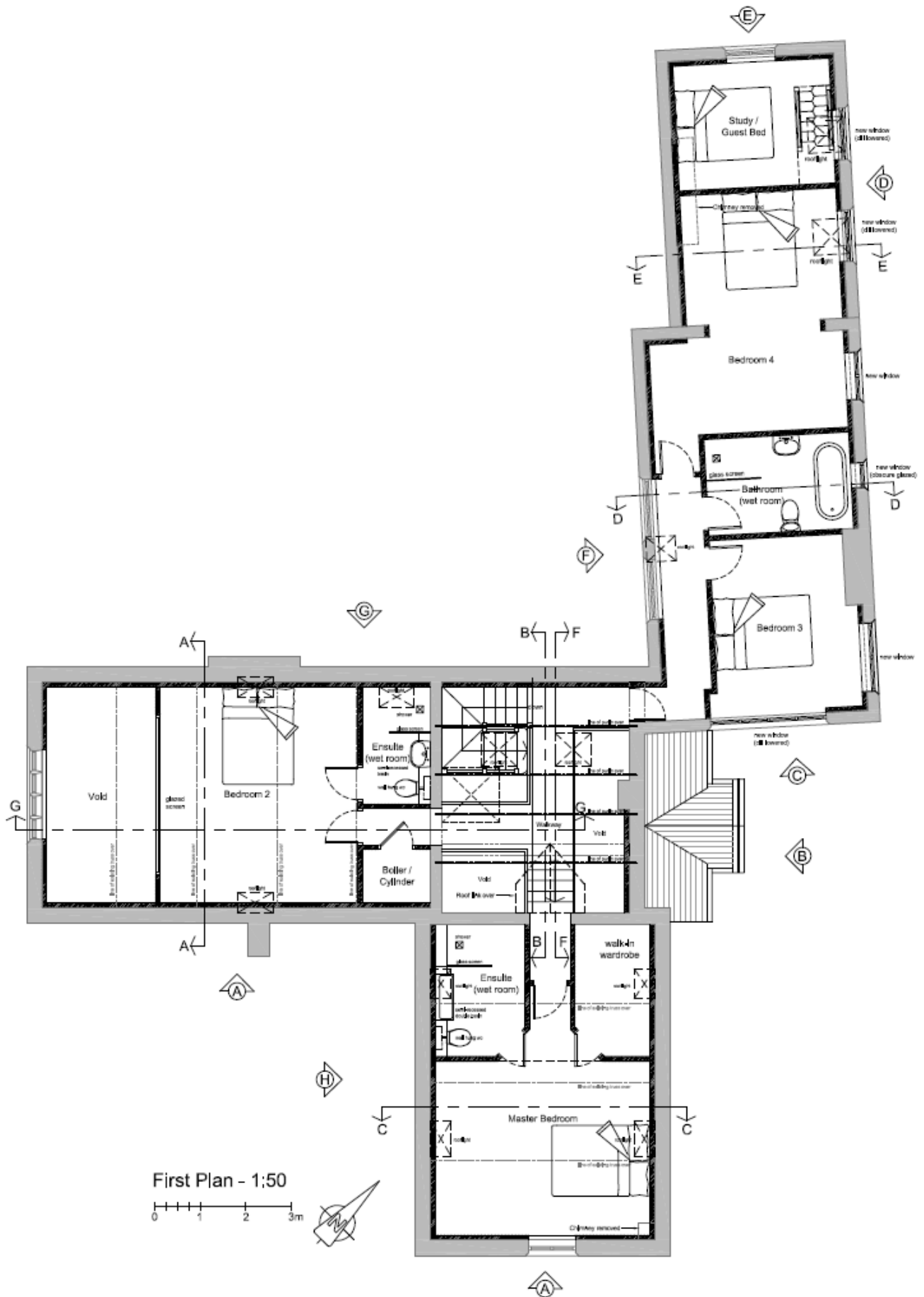


Kitchen / Dining



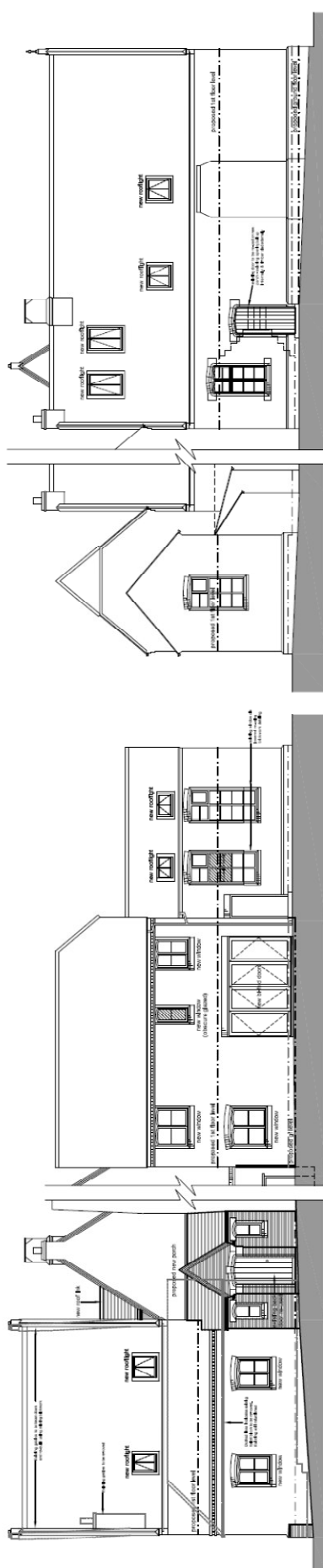
Entrance Hallway





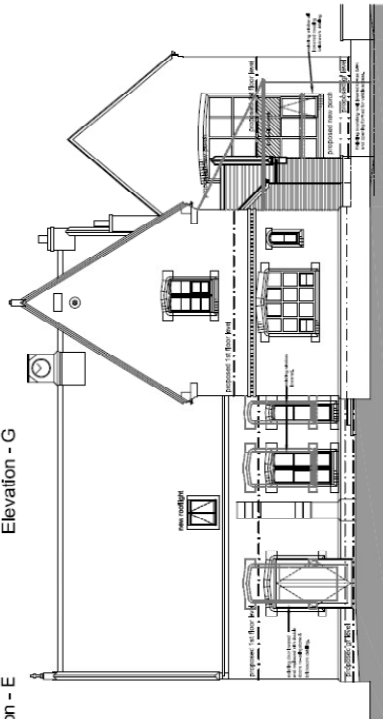
First Plan - 1:50



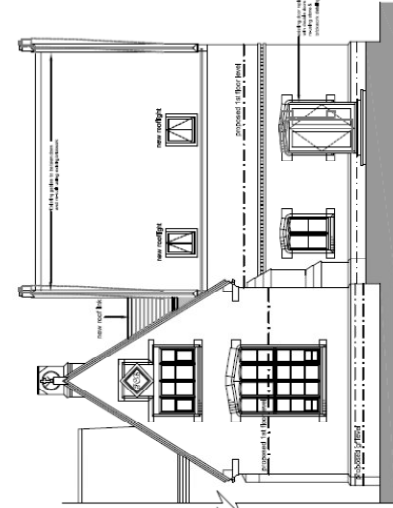


0 1 2 3 4 5 6 7 8 9 10

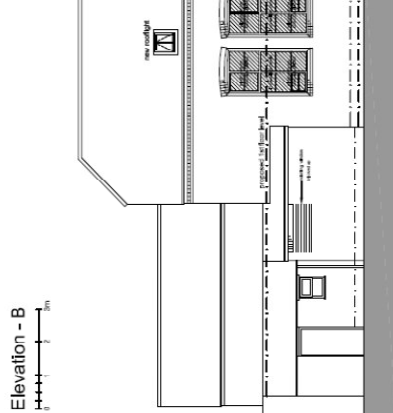
Elevation - G



Elevation - E



Elevation - D



Elevation - A

Elevation - H

Elevation - F